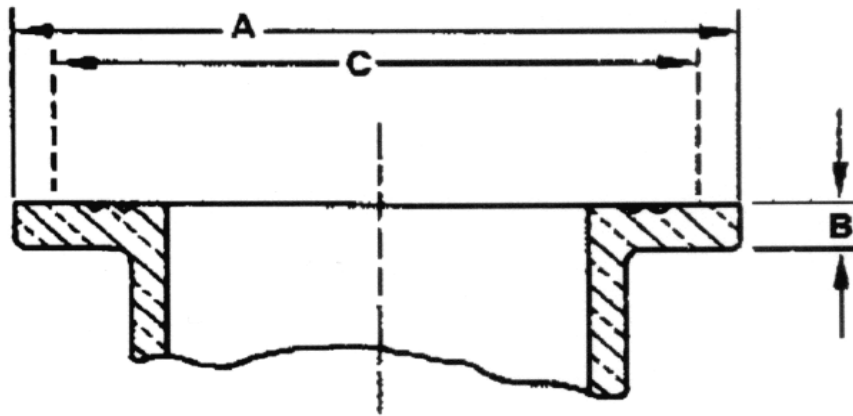


<b>Company:</b> _____
<b>Project:</b> _____
<b>Page#:</b> _____ of _____

## TEMPLATES FOR DRILLING FLANGES

Flange diameters and drilling templates of 150-lb bronze flanges are the same as the 125-lb. USA Cast-Iron Standard (B16.1). Flanges diameters and drilling templates of 250-lb and 300-lb. Broze flanges are the same as the 250-lb. USA Cast-Iron Flange Standard (B16.5) The faces of these flanges are machined with a serrated spiral finish. When cast iron or steel flanges with raised face are bolted to these flanges, the raised faces should be removed. Full fac gaskets should be used. Metallic Gaskets should not be used.



### 150 POUND FLANGES

Nominal Size of Pipe Inches	A Outside Diameter of Flange Inches	B Minimum Thickness of Flange Inches	C Diameter of Bolt Circle Inches	Diameter of Drilled Bolt Holes Inches	Diameter of Bolts Inches	Length of Bolts Inches	Number of Bolts
1/2	3 1/2	1/16	2 1/8	5/8	1/2	1 1/4	4
3/4	3 7/8	11/32	2 3/4	5/8	1/2	1 1/2	4
1	4 1/4	3/8	3 1/8	5/8	1/2	1 1/2	4
1 1/4	4 3/8	13/32	3 1/2	5/8	1/2	1 1/2	4
1 1/2	5	7/16	3 7/8	5/8	1/2	1 1/2	4
2	6	1/2	4 3/4	3/4	1/8	1 3/4	4
2 1/2	7	9/16	5 1/2	3/4	1/8	2	4
3	7 1/2	5/8	6	3/4	1/8	2	4
3 1/2	8 1/2	11/16	7	3/4	5/8	2 1/4	8
4	9	11/16	7 1/2	3/4	5/8	2 1/4	8
5	10	3/4	8 1/2	?/8	3/4	2 1/2	8
6	11	13/16	9 1/2	?/8	3/4	2 1/2	8
8	13 1/2	15/16	11 3/4	?/8	3/4	2 1/4	8
10	16	1	14 1/4	1	7/8	3 1/4	12
12	19	1 1/16	17	1	7/8	3 1/4	12



**Columbia Specialty Company, Inc.**

Distributor of Mechanical and Industrial Piping Products

Phone: (562) 634-6425 Fax: (562) 408-2914

**Company:** \_\_\_\_\_

**Project:** \_\_\_\_\_

**Page#:** \_\_\_\_\_ **of** \_\_\_\_\_

## TEMPLATES FOR DRILLING

### FLANGES

#### 250 POUND FLANGES

Nominal Size of Pipe Inches	A Outside Diameter of Flange Inches	B Minimum Thickness of Flange	C Diameter of Bolt Circle Inches	Diameter of Drilled Bolt Holes Inches	Diameter of Bolts Inches	Length of Bolts Inches	Number of Bolts
1/2	3 3/4	13/32	2 3/8	5/8	1/2	1 1/2	4
3/4	4 1/8	7/16	3 1/4	3/4	3/8	1 3/4	4
1	4 7/8	1/2	3 1/2	3/4	3/8	1 3/4	4
1 1/4	5 1/4	17/32	3 7/8	3/4	3/8	2	4
1 1/2	6 1/8	9/16	4 1/2	7/8	3/4	2	4
2	6 1/2	5/8	5	3/4	3/8	2	8
2 1/2	7 1/2	11/14	5 7/8	7/8	3/4	2 1/4	8
3	8 1/4	7/8	6 5/8	7/8	3/4	2 1/2	8
3 1/2	9	13/16	7 1/4	7/8	3/4	2 1/2	8
4	10	7/8	7 7/8	7/8	3/4	2 1/4	8
5	11	13/16	9 1/4	7/8	3/4	2 1/4	8
6	12 1/2	1	10 3/8	7/8	3/4	3	12
8	15	1 1/8	13	1	3/8	3 1/4	12
10	17 1/2	1 3/16	15 1/4	1 1/8	1	3 3/4	16
12	20 1/2	1 1/4	17 3/4	1 1/4	1 1/8	3 3/4	16

#### 300 POUND FLANGES

Nominal Size of Pipe Inches	A Outside Diameter of Flange Inches	B Minimum Thickness of Flange	C Diameter of Bolt Circle Inches	Diameter of Drilled Bolt Holes Inches	Diameter of Bolts Inches	Length of Bolts Inches	Number of Bolts
1/2	3 3/4	1/2	2 5/8	5/8	1/2	1 3/4	4
3/4	4 3/8	17/32	3 1/4	3/4	3/8	2	4
1	4 7/8	19/32	3 1/2	3/4	3/8	2	4
1 1/4	5 1/4	5/8	3 7/8	3/4	3/8	2	4
1 1/2	6 1/8	11/16	4 1/2	7/8	3/4	2 1/4	4
2	6 1/2	3/4	5	3/4	3/8	2 1/4	8
2 1/2	7 1/2	13/16	5 7/8	7/8	3/4	2 1/2	8
3	8 1/4	29/32	6 5/8	7/8	3/4	2 3/4	8
3 1/2	9	31/32	7 1/4	7/8	3/4	3	8
4	10	1 1/16	7 7/8	7/8	3/4	3	8
5	11	1 1/8	9 1/4	7/8	3/4	3 1/4	8
6	12 1/2	1 3/16	10 5/8	7/8	3/4	3 1/4	12
8	15	1 3/8	13	1	3/8	3 1/4	12